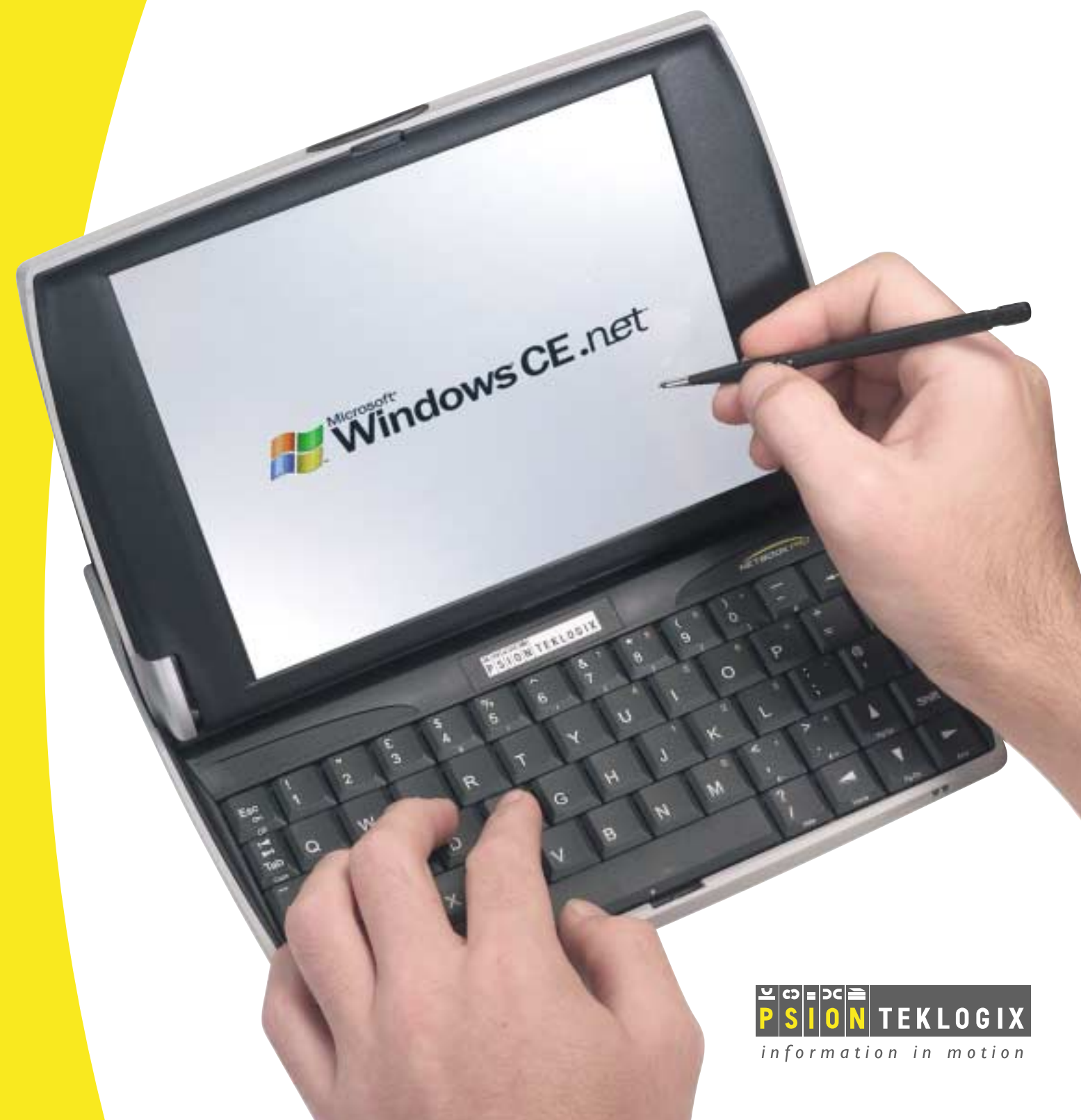


NETBOOK PRO: Combines the virtues of a laptop and PDA



About Psion Teklogix

Psion Teklogix is a global provider of solutions for mobile computing and wireless data collection. The company's fully integrated mobile computing solutions include rugged hardware, secure wireless networks, robust software, professional services and exceptional support programs. The largest operating division of Psion PLC, Psion Teklogix plays a key role in its parent company's vision to create new ways to access mobile data. With over three decades of industry experience, the company has customers in more than 60 countries around the world, and 43 sales and support offices in 20 countries. Psion Teklogix is headquartered in Mississauga, Ontario, Canada with additional corporate offices located in the United States, Europe and Asia. For more information, visit www.pSIONteklogix.com.





The Drivers for a Mobile Workforce

Businesses continue to look for ways to mobilize their workforces through mobile Customer Relationship Management (CRM) initiatives in order to improve operational efficiency, reduce costs and improve customer satisfaction. The rapidly growing mobile CRM market includes such roles as sales force automation, field service management and field inspection/data collection. These roles typically spend a large proportion of time outside the company office, and they need the power to carry out mobile CRM tasks anywhere to deliver increased productivity, accuracy and efficiency, resulting in higher levels of customer satisfaction.

The Challenge of a Mobile Workforce

Mobilization initiatives are complex projects fraught with challenging decisions. One key challenge is finding the right device that suits both the application and the end-user. Until now, companies have been faced with the difficult trade-offs between the virtues of larger form factors, such as laptops, and smaller form factors, such as PDAs.

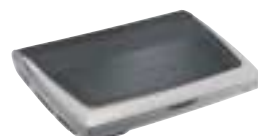
Mobile workforces typically need a task-oriented computing device that is portable, yet powerful enough to run advanced mobile-CRM applications and carry out work-related tasks anywhere. The device must be flexible enough to incorporate necessary peripherals, such as radios and storage. It also must be designed based on industry standards to ensure seamless integration into an existing or desired infrastructure. Finally, the device must be ergonomic, enabling ease of use even when a formal office is not available.

Introducing the NETBOOK PRO – An ideal enterprise class mobile computing device for smarter working on the move

The NETBOOK PRO is a unique, high-performance clamshell mobile computer that bridges the gap between the large and small form factors, eliminating the difficult trade-offs that enterprises have been forced to make in the past. NETBOOK PRO combines the virtues of a larger laptop device, such as a large screen, full keyboard and multiple communications ports, with the virtues of smaller PDA-type devices, such as portability, instant-on, long battery life and touch screen capabilities.

With class-leading connectivity and expansion capabilities, the NETBOOK PRO delivers outstanding flexibility. Based on industry standard Microsoft Windows CE .NET and Intel XScale architecture, the NETBOOK PRO integrates with almost any infrastructure. With its portable size, light weight, instant-on capability, full keyboard and large touch screen display, the NETBOOK PRO delivers exceptional ergonomics.

With the power to carry out work-related tasks anywhere, the NETBOOK PRO is an ideal enterprise class mobile computing device, delivering increased productivity and efficiency by enabling advanced mobile CRM applications across the enterprise.





Compact Flash

SDIO

PCMCIA

Instant On
No frustrating and unproductive boot-up time

Display
SVGA (800x600) TFT transmissive display with CCFL backlight

Processor
Intel XScale PXA255 400MHz
Memory
32MB Flash 128MB SDRAM

Large 8.5" 800x600 TFT SVGA touch-screen display
Stunning graphics capabilities
Touch screen for efficient application interface with stylus. No cumbersome mouse or trackball

NETBOOK PRO – Smarter Working on the Move

Product shown actual size

Exceptional Ergonomics

About half the size of a typical laptop, the NETBOOK PRO is both portable and lightweight, yet delivers a full keyboard and a large, daylight readable TFT SVGA 800 x 600 color touch display. Additional features, such as instant-on and long battery life, combine to deliver a mobile computing device that is ideal for mobile enterprise applications.

Unparalleled Flexibility

Unparalleled connectivity and expansion capabilities means the NETBOOK PRO can be tailored to the unique needs of each customer. Data transfer and peripheral connectivity is achieved via the USB Master, RS-232 and IrDA ports. The Compact Flash, SDIO and PCMCIA Card Slots deliver expansion and/or network connectivity capabilities, such as 802.11, GSM/GPRS, CDMA/1xRTT and/or Bluetooth.

Ease of Integration

Based on industry standard Windows CE .NET and Intel XScale architecture, the NETBOOK PRO ensures seamless application development and integration into enterprise back-office systems. The advanced networking and security protocol support of CE .NET makes it the ideal operating system choice for mobile computing devices. Application development is simple through SDK tools and popular development environments, such as Visual Studio.net and JEM-CE JAVA virtual machine.



Portable size
About half the size of a typical laptop
Lightweight design (2.8lbs) ideal for mobile computing applications

Industry-standard Windows CE .NET and Intel XScale architecture

- Seamless application development and integration into enterprise back-office systems

Windows CE .NET

- Supports advanced networking and security protocols – ideal for enterprise mobile computing applications

Application development

- Simple using popular development environments: Visual Studio.net, Visual Basic, Visual C++, Visual C#, Visual J#, Java
- Online Software Development Kit for quick, dedicated developer support

3rd party applications

- Stellent File Viewer for viewing 50+ file types
- Odyssey Pocket On-Schedule PIM keeps your schedule at your fingertips
- JEM-CE Java Virtual Machine based on Insignia technology for complex java applications
- Certicom VPN client ensures you're always in touch (Sold Separately)

Includes key features such as:

- Bluetooth Manager
- Windows Messenger
- Remote Networking
- IPV6
- APN Manager (for GPRS)
- On-line help
- Persistent Memory Storage (FLASH)
- Auto Install Folder
- ActiveSync
- Internet Explorer 6 for CE
- Inbox
- Advanced Power Management
- WordPad
- Windows Media Player
- NET Compact Framework
- Calculator

USB Master
Connect printers, scanners, cameras, memory sticks, etc.

Audio
AC97 Codec 2.5mm stereo headphone/mic socket Speaker for alarms, buzzes and key clicks

Full QWERTY keyboard
Allows easy input of large amounts of data
Language variants (French and German) also available

Compact Flash, SDIO and PCMCIA slots
Storage, network connectivity and support for numerous expansion devices
USB Master for connecting printers, scanners, cameras, memory sticks

Controls
Resistive touch screen for pen navigation; 58-key touch-type keypad
Power Management for 8+ hours of use
Advanced power management schemes and a 2200 mAh battery deliver a full shift of use



Smarter Working on the Move

The task-oriented NETBOOK PRO is an ideal device for the mobile CRM market because it combines the virtues of a PDA and a laptop into a single device. Following are two examples of how the flexibility and integration capabilities of the NETBOOK PRO combine with its exceptional ergonomics to deliver an ideal, enterprise class mobile computing device.

Field Service Management

A field service engineer typically works on-site at customer locations. Therefore, it is imperative that information and updates can be received in the field without having to return to base, wasting both time and money.

When equipped with NETBOOK PRO, field service engineers can receive the latest service requests wherever they are, enabling them to get to the customer quickly. NETBOOK PRO supports a range of wireless connectivity options (LAN/WAN), enabling work orders to be sent directly to field engineers while they are remote – giving them more time to take care of the customer. Manuals and technical documents can be stored on an expansion card such as Compact Flash or SDIO and then viewed on the large screen. Paper-based forms can be replicated or replaced, and orders can be placed with real-time inventory management.

NETBOOK PRO keeps your Field Service Engineers in the field, providing them with the tools to deliver on customer needs, thereby improving operational efficiency and customer response, leading to greater customer satisfaction and competitive advantage.

Sales Force Automation

Mobile field sales workers are key revenue contributors and typically spend much of their working day interacting with customers. NETBOOK PRO ensures that your sales force gets information when they need it.

Prior to visiting customers, a mobile sales worker remotely downloads customer details, in addition to any product changes and price amendments. While visiting the customer, NETBOOK PRO can be utilized as a sales presentation tool with its crisp, large display acting as the visual interface. If the customer decides to order, wireless connectivity gives NETBOOK PRO the ability to simultaneously act as a real-time ordering tool. On-screen signature capture delivers instantaneous order processing.

NETBOOK PRO is a customer relationship management (CRM) tool that gives the sales force access to a broad range information. Mobile field sales workers can leverage all of the centralized data regarding their customers and link that with company data, service call records, inventory control and other back-office processes. Providing mobile field sales workers with instant information access improves customer responsiveness, and in turn, revenues.

NETBOOK PRO empowers your mobile sales force to maximize its productivity and enhance customer satisfaction.

